

FORD CAR

EXTERIOR COLORS FOR 2010

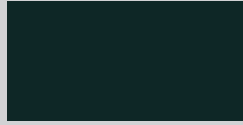
New Colors for 2010



Grabber Blue CI
Mustang



Kona Blue Metallic L6
Mustang



Atlantis Green Metallic UL
Fusion, Fusion Hybrid,
Taurus SHO⁽¹⁾



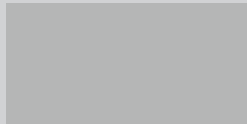
Steel Blue Metallic UN
Taurus



Gold Leaf Metallic UP
Taurus



Natural Neutral Metallic UR
Focus



Ingot Silver Metallic UX
Focus, Taurus



Torch Red D3
Mustang



Sunset Gold Metallic GQ
Mustang



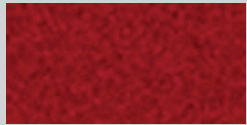
Smokestone Metallic HG
Fusion



Performance White HP
Mustang



Cinnamon Metallic HT
Taurus



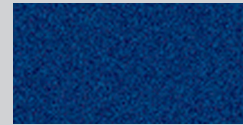
Sangria Red Metallic JV
Focus, Fusion



Light Ice Blue Metallic LS
Fusion Hybrid



Blue Flame Metallic SZ
Focus



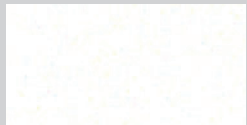
Sport Blue Metallic U1
Fusion



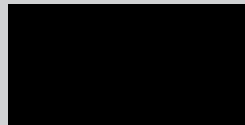
Red Candy Metallic with Tinted Clearcoat U6
Mustang, Taurus



Black UA
Focus, Mustang



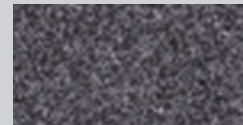
White Platinum Metallic Tri-coat UG
Fusion, Fusion Hybrid,
Taurus



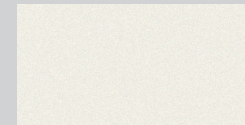
Tuxedo Black Metallic UH
Fusion, Fusion Hybrid,
Taurus



Brilliant Silver Metallic UI
Fusion, Fusion Hybrid,
Mustang



Sterling Grey Metallic UJ
Fusion, Fusion Hybrid,
Mustang, Focus



White Suede WS
Focus, Fusion, Taurus

(1) Atlantis Green Metallic available on Taurus SHO only.

NOTE: Some colors may be optional at extra cost. Please see your dealership Sales Consultant for details.